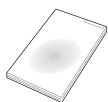
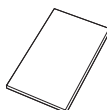


| Package Contents

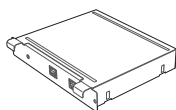
☑️ Unpack the product and check if all of the following contents have been included.



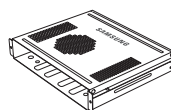
Quick Setup guide



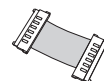
Warranty Card
(Not available in some locations)



HDBase-T



Bracket



FFC Cable

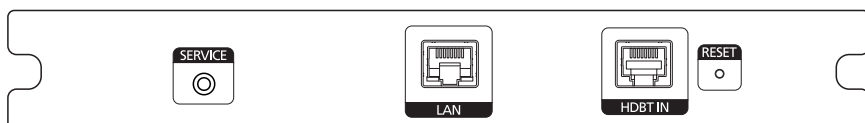


Screw (M4 L6) 4EA



Screw x (M3 L6) 4EA

| Ports



SERVICE	: Update SUB MICOM. * SUB MICOM controls IR, RS232C and POWER.
LAN	: Send Internet signals to other products. Ensure the HDBT IN port is connected to HDBaseT(TX). Ensure the HDBaseT(TX) is connected to internet.
HDBT IN	: Connect to Internet or transmit video content through a LAN cable. * Ensure HDBase-T (Rx) is connected directly to HDBase-T (Tx) via a LAN cable.
RESET	: Restart HDBase-T.

| Using a HDBase-T

- HDBase-T (Tx) transmits data from an external device to HDBase-T (Rx).
Make sure to connect them directly using a LAN cable.
* Data transmission is not available if HDBase-T (Rx) is connected to HDBase-T (Tx) through a hub.
- After installing and connecting HDBase-T, power on the display device.
- Press the SOURCE button on the remote control provided with the display device.
Next, select Plug In Module.

HDBase-T works with unshielded twisted pair (UTP) or shielded twisted pair (STP) cables; but, to ensure CE compliance, STP cables and STP Connectors are required.

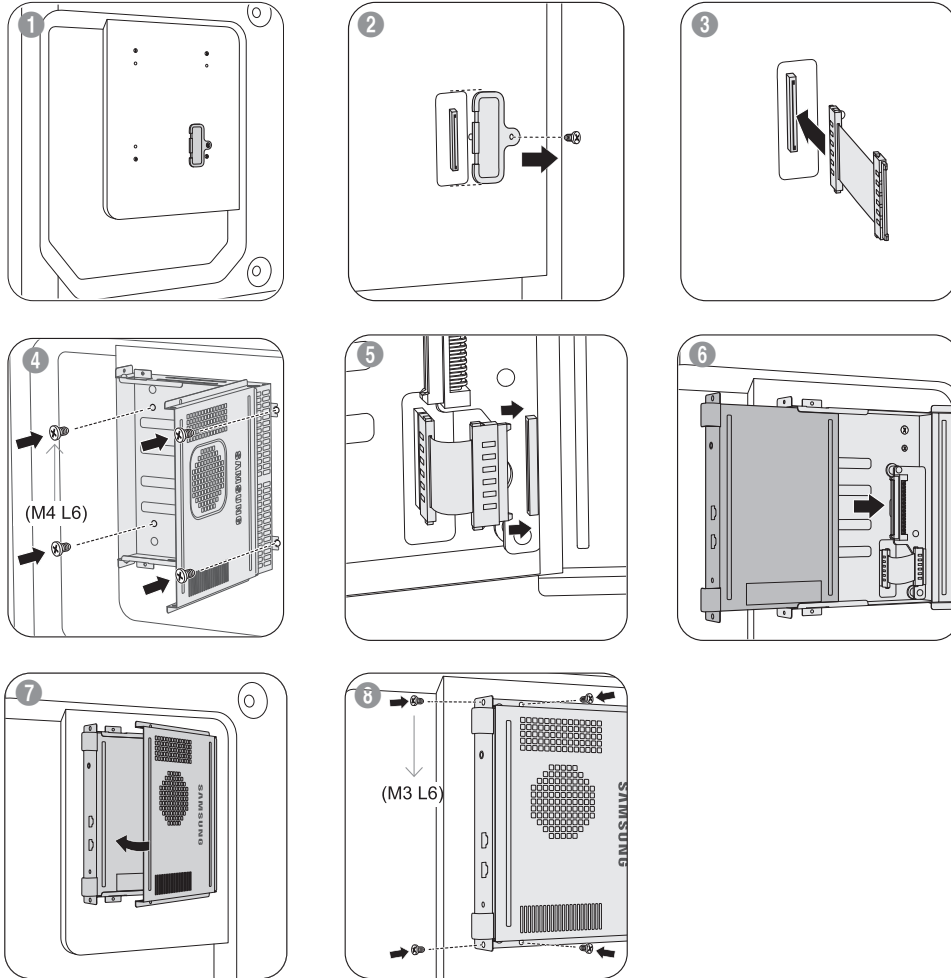
Shielded cable and connectors are recommended to safeguard against unpredictable environmental electrical noise which may impact performance.

It is recommended to use an STP cable to maximize performance.
Using a UTP cable or patch may decrease performance.



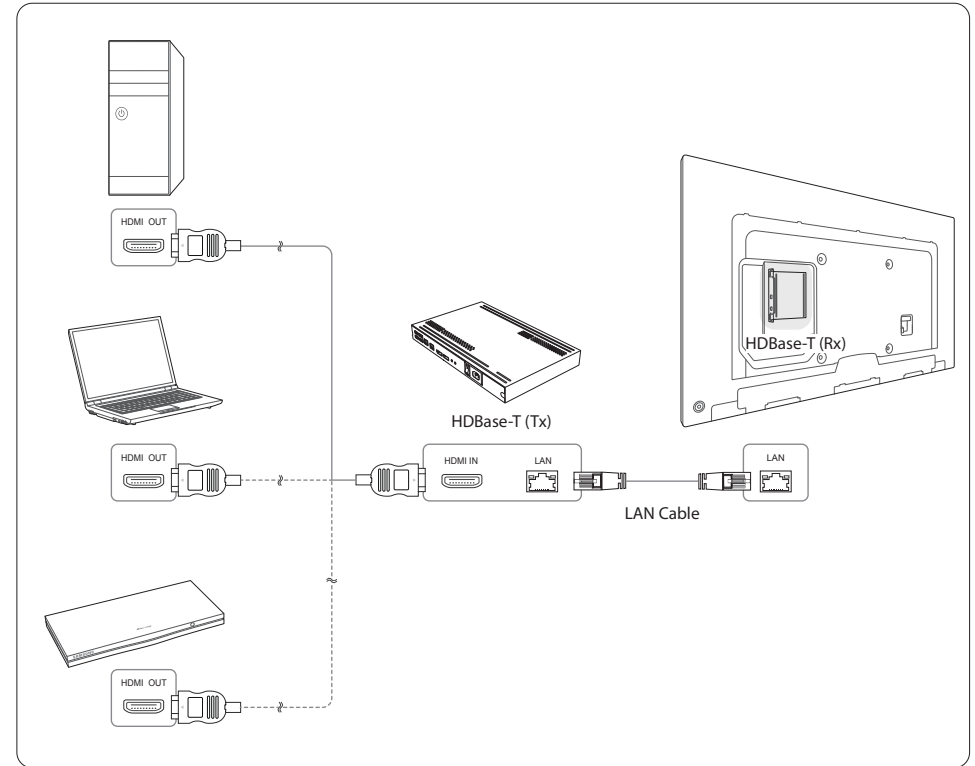
Mounting the HDBase-T

- ✓ To install the network box inside the product, ensure it is installed by a technician who is trained to install and disassemble the product.
- ✓ Installation requirements may vary depending on the model.



This product is for industrial purposes.
Be sure to install the product in a compatible Samsung Display.
(The product cannot be used independently.)
Do not attempt to disassemble, repair or alter the product yourself.
Do not insert any metal or foreign object into the product.
Be sure the product is installed by a professional trained for installation and uninstallation.
Contact Samsung Electronics for details.

Connections



Product Specifications

	HDBase-T
Main Chipset	Valens VS100RX
Power	Less than 10 watts
LAN	10/100 Ethernet Output Port
Size	200 x 180 x 35 mm / 7.87 x 7.09 x 1.38 inches
Compatible Model	ME95C, ED65/75C *PE40C, PE46C, PE55C, ME75C will have compatibility in the near future. (Contact sales partner for details compatible model.)

This device is a Class A digital apparatus.

(USA only)

Dispose unwanted electronics through an approved recycler.

To find the nearest recycling location, go to our website: www.samsung.com/recyclingdirect or call, (877) 278 - 0799